

# Dishwasher Buying Guide

A step-by-step guide to find the  
perfect dishwasher for your  
home project

**YALE**  
APPLIANCE

---



# Table of Contents



---

## American vs. European

Two different styles with different properties



---

## Terms

All the terms used to talk about dishwashers



---

## Cycles

the most common dishwasher settings explained



---

## How to Buy

How to compare and choose dishwashers

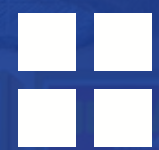


---

## About Yale

A little about us





# Brands

We discuss brands in the Premium, Affordable  
Luxury, and Commodity segments





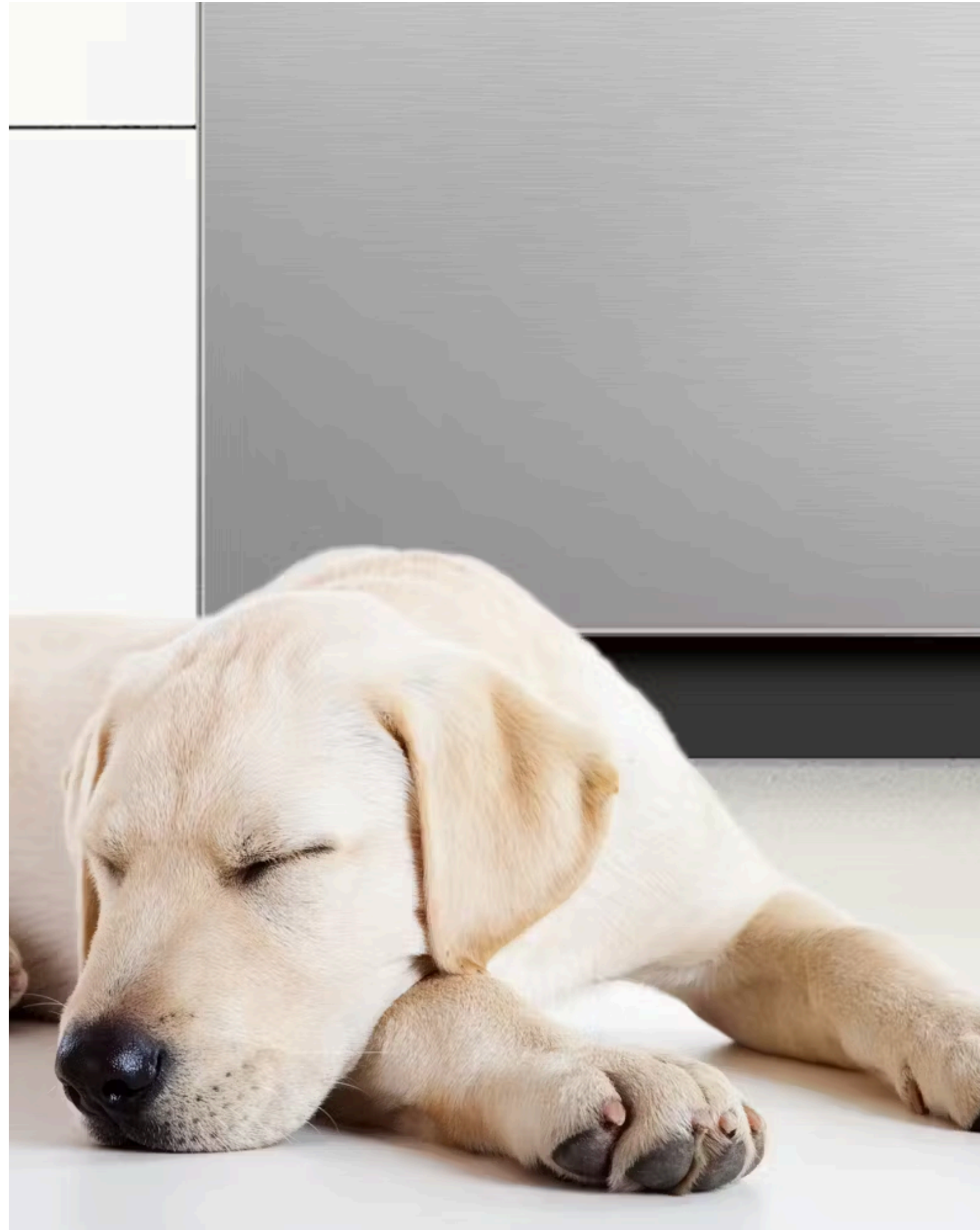
# Quieter Dishwashers

You now have plenty of options for quiet dishwashers in your open kitchen. Miele sets the standard at 37 dB, with Bosch close behind at 38 dB.

That said, you won't hear a dishwasher operating at 44 dB, so there's no need to spend extra for a "quieter" model.



**Quietest Dishwashers by**  
**Decibel Rating**



# Drying Systems

Dishwashers can now dry lightweight items like plastics.

LG adds steam, and many models now pop open to release steam and moisture.

Miele used to be the best, but **Bosch's CrystalDry system with volcanic elements is now the top choice.**

Below are some of the most effective drying methods:

- **Condensation Drying:** Uses steam, and JetDry; works moderately well, especially on plastics
- **Heated Drying:** Heats the interior , effective but not ideal for plastics.
- **Auto-Opening Doors:** Releases steam and moisture, especially effective overnight
- **CrystalDry:** Bosch and Thermador use zeolite to enhance heat and absorb moisture





# New Features

## **Knock2Open or Pause**

You can knock on a Miele dishwasher top open it or pause a cycle with the Fisher & Paykel dishwasher.

## **Pressurized Wash Cycles to Scour Pots**

Samsung's Storm Wash, Miele's Intensive Wash, and Bosch's Power Control target tough food residues with adjustable or specialized sprays

## **Automatic Dispensers**

Miele now has the first automatic detergent dispenser known as AutoDos.

You can load up your dishwasher with detergent, and your dishwasher will release the right amount each time for cleaner dishes.





# Single and Double Drawer Dishwashers

Fisher & Paykel offers 27 styles of single and double-drawer dishwashers across three series.

Double-drawer models are uniquely designed for easy access to the top drawer, reducing the need to bend and adding a modern touch.

However, they do require a slightly different loading approach.



**Should You Buy A Fisher & Paykel DishDrawer (video)**







# American Vs. European

Two different Styles with two different priorities





# American-Style dishwashers

**Brands:** GE, Maytag, Whirlpool, Frigidaire, Amana, Samsung, LG, Electrolux, Viking, JennAir and KitchenAid.

**Key Differences:** American dishwashers have a grinder at the bottom rather than the removable filter of the Europeans.

American models also tend to have more cycles and options and are typically less expensive.

KitchenAid has moved away from the grinder to the filter.

GE's Profile series is the only American-style option with a quietness rating below the 42-decibel threshold.





# European-Style Dishwashers

**Brands:** Bosch, Asko, SMEG, Gaggenau, Samsung Blomberg, Dacor, Thermador, and Miele.

**Key Differences:** European models have stainless steel tubs and are typically quieter than their American counterparts. They also use less water and energy by hotter wash cycles.

Most importantly, European dishwashers will sit flush in a 24" deep cabinet even after accepting a custom panel.

Be cautious with lesser-known European dishwasher brands, as finding post-sale service may be challenging.







# Terms

Talk like an appliance pro and learn the key  
dishwasher features and trends





# Dimensions

The most common dishwasher size is approximately 33 7/8" tall, 24" wide, and 24" deep.

This size is available in both built-in and portable models, giving you flexibility based on your space needs.

If you have limited cabinet space, some brands offer compact models designed to fit an 18-inch-wide cabinet.

Miele, Bosch, GE, and Frigidaire are all known for providing these more compact options, which are perfect for smaller kitchens or specific installation requirements.





# ADA Dishwashers

ADA dishwashers are designed in accordance to the Americans with Disabilities Act (ADA). They are shorter at 32 inches tall.

Bosch, Miele, Asko, and GE manufacture an ADA compliant dishwasher.

You can now buy a 39-44 dB dishwasher without paying significantly more that's ADA compliant.



**Best ADA Approved  
Dishwashers**





# Plastic vs. Stainless Steel Tub

Samsung and Bosch have stainless and plastic hybrid dishwashers for their least expensive series.

Both stainless steel and plastic hold water. The quality perception certainly favors stainless.

**Stainless is non-porous and germ and odor resistant.**

Clean plastic tubs with citric acid a few times every year.





# Quietness

Quietness is important when your kitchen is open to the living room, as noise can carry through your space.

Many people pay too much for a quiet dishwasher.

The Miele dishwasher is the quietest at 37 dB, but it costs \$3,699.

You can get a dishwasher with a noise level of 44 dB for under \$1,000, which still keeps the noise low without the high price.





# Integrated vs. Regular Controls

There are up to five different door styles per model with front control, integrated, and panel-ready being the most popular.

Integrated dishwashers are the newest with controls on the top of the door. In other words, you won't see the control panel.

However, it will cost \$100–\$200 more for an integrated model with the same features as a regular dishwasher.

Integrated dishwashers can also be purchased with a towel bar handle to match other appliances or with a pocket style handle.



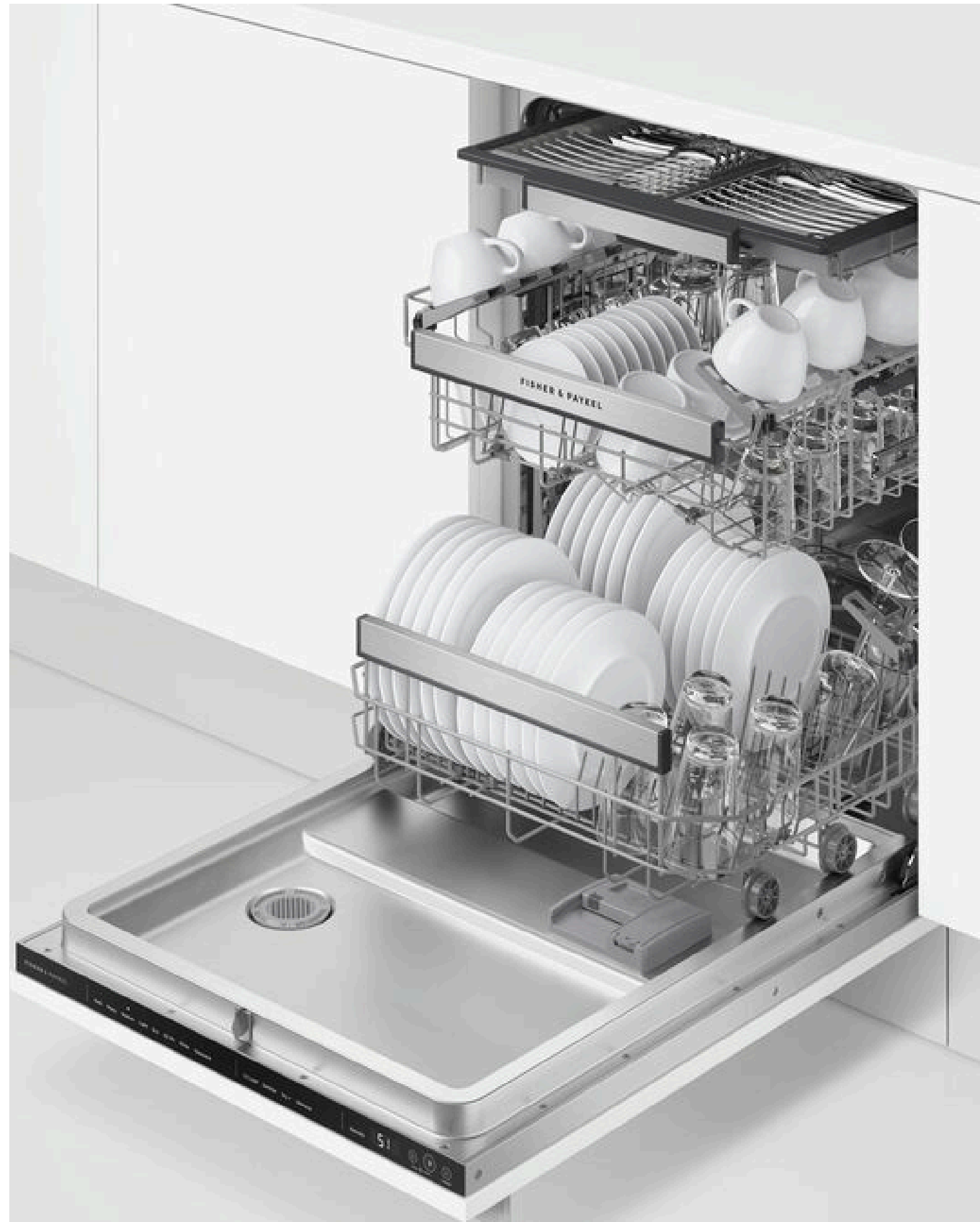
# Dishwasher Racks

Modern dishwashers now have better racking systems. The top rack often has nine adjustable positions.

Many models include a third rack for silverware. You'll also find more flexibility on the bottom rack to fit different dish sizes.

The G 7000 Miele is one of the best, designed to hold large items like plates, platters, and even vases.

KitchenAid offers a large middle rack, giving you extra space to load more plates.





# Smart Functionality

Several brands, including GE, Bosch, LG, Samsung, and Miele, offer dishwashers with Wi-Fi capabilities in select models.

With these smart dishwashers, you can control and monitor the appliance remotely through an app on your phone. This allows you to see how much time is left on the cycle and adjust settings if needed.

For quieter dishwashers, this feature can be especially useful, as you can avoid interrupting the cycle by opening the door prematurely.



**Smart Appliance**  
**Buying Guide**





# Custom Panels

Adding a panel to your dishwasher lets it blend in with your cabinets, giving your kitchen a clean, built-in look.

It's a popular choice for open layouts or modern designs where you want appliances to stay out of sight.

Just keep in mind that most American dishwashers aren't truly panel-ready. Even with a panel, they'll stick out about 2 inches past the cabinets, which breaks up the line of your kitchen.

**If you want a flush, seamless fit, consider a European model instead.** These are designed to sit fully inside the cabinet space so the panel lines up perfectly.



**Best Panel-Ready  
Dishwashers**







## Cycles

Cycles have changed now adding water pressure for scouring dishes like Beko's AqualIntense cycle and Miele's QuickIntenseWash for a 58-minute wash and dry cycle.





# Washing Performance

Dishwashers haven't changed much, except for improvements in quietness and cycle options, with a few exceptions.

KitchenAid's newer M Series models feature a 4-level wash system, but one of the spray arms is located in the rack.

**Miele offers the most comprehensive system, with three full spray arms:** one at the top and one under each basket.

Bosch, LG, Profile, and most other brands typically have two spray arms, with one smaller arm located at the top.





# Cycles & Options

- **Pots & Pans:** Extended wash cycle with regular heat (120° – 167°).
- **Normal:** Cycle without the preheat of the above.
- **China / Crystal:** Shorter wash at a lower temperature.
- **Autowash:** Cycle uses a soil sensor to adjust the water use.
- **Half-Load:** Cycle for washing the top rack only
- **Sanitize:** Heats up the rinse part of the wash to remove bacteria.
- **Temperature:** 120° to 160° depending on the cycle and brand of dishwasher.
- **Speed60:** Wash and dry a small load within 60 minutes.
- **Fast Wash:** Speeds the cycle by heating to 167 degrees





# Wash Arms

**QuadWash:** LG dishwashers utilize oblong arms to cover more surface area in the dishwasher, ensuring that every dish is reached and cleaned effectively.

**WaterWall:** Samsung offers a system that washes back and forth, replacing the traditional round spray arms.

**PowerControl:** Bosch divides the bottom rack into four quadrants, allowing you to choose light, medium, or heavy spray settings.

This makes it possible to wash delicate china and heavy pots and pans in the same load.



**The Fastest Dishwasher**  
**Cycle Times**



# Drying Performance

The following drying methods are listed from least effective to most effective:

- **Condensation Dry:** Most common. Uses heat, JetDry, and time. Works for plates, not plastics.
- **Heated Dry:** Adds extra heat but doesn't improve plastic drying much.
- **Vented Dry:** Miele pulls in cooler kitchen air to condense steam.
- **Steam Dry:** LG uses steam to reduce spotting on glassware.
- **Auto Opening Doors:** Samsung, Miele, and Bosch 500 pop open to release moisture—very effective.
- **CrystalDry:** Bosch 800/Benchmark use volcanic minerals to fully dry items, even plastics.







# How To Buy

How to compare and choose a new dishwasher





# How to Buy a Dishwasher

When it comes to choosing the right dishwasher for you, consider the following options:

- **Bosch** offers excellent features and more reasonable prices than Miele. Its CrystalDry system is the best among all dishwashers.
- **LG** dishwashers utilize steam to loosen heavy, baked-on stains.
- **Miele's G 5000 and G 7000 series** dishwashers are the best in the market with automatic dispensers, unique cycles, and excellent washing, drying, and racking performance.
- **Thermador** offers a free dishwasher with qualifying Thermador purchases.



**The Best Dishwashers of**  
**2025**





# How to Buy a Dishwasher

If you're looking to spend less, consider these solid alternatives:

- **GE Profile** is the only dishwasher with a grinder and a low 42-decibel rating. It also has dedicated sprays for bottles and silverware.
- **KitchenAid** has two series. Their 200 series has a 39 dB rating, while the 600 series has four wash levels and better racking.





# Reliability

Based on 33,000 service calls in the last 12 months, the most reliable dishwasher brands are:

1. **LG**
2. **Thermador (made by Bosch)**
3. **Miele**

However, service quality can vary by location.

Be sure to research the availability and reputation of service providers in your area before purchasing a dishwasher.



**The Most Reliable**  
**Dishwashers**





# Best Times to Buy a Dishwasher

In 2025 and beyond, many dishwashers are offered with rebates and lower prices due to excess supply.

If you're not in a rush, **waiting for sales events like Black Friday, Presidents' Day, or Labor Day can help you save 10–30%.**

Also, check for installation costs.

Choose a reputable installer to avoid issues, as improper installation can lead to water damage, which can be a costly and frustrating problem to fix.





# Our Final Advice

Don't be overly focused on noise ratings under 44 dB; you can find quiet dishwashers for under \$1,000.

Instead, compare features like washing and drying performance, racking options, and cycle variety, particularly drying capabilities.

Reliability is essential, as service options can vary by location.

For a streamlined look, consider adding a custom cabinet panel to a European-style dishwasher.

Bosch, Miele, and KitchenAid are the top brands, but LG, Profile, Cove, and Samsung also offer solid choices.





# Frequently Asked Questions

## **What Size Dishwasher Do I Need?**

- Most standard dishwashers are about 24 inches wide, 24 inches deep, and 35 inches high, fitting into a standard under-counter space in a kitchen. However, compact models (18 inches) are available for smaller kitchens or households with lighter dishwashing needs. Measure your space before shopping and consider how much dishware you typically have in a load.

## **What's the Difference Between a Built-In, Portable, and Drawer Dishwasher?**

- A built-in dishwasher is installed under your countertop and connected to your plumbing. A portable dishwasher can be moved and hooked to a faucet, making it a flexible option for small kitchens. Drawer dishwashers are split into two separate drawers, allowing you to wash smaller loads independently, saving energy and water for lighter washes.

## **What's the Best Dishwasher Brand?**

- The "best" brand depends on what you're looking for: Bosch, Miele, and KitchenAid are best known. But you also have great options in LG, GE, Profile, and others.

## **What Dishwasher Features Should I Look For?**

- Key features include quiet operation (below 44 dB for near-silent running), adjustable racks for loading flexibility, energy efficiency (look for the Energy Star label), and washing, drying, and racking options.

## **How Important Is Noise Level?**

- This is very important, especially if your kitchen is near your living or entertainment space. Noise levels below 44 dB are quiet (almost whisper-like), while 45–50 dB is comparable to a quiet conversation. Over 50 dB might be noticeable in an open-concept space.



# Frequently Asked Questions

## Is Stainless Steel or Plastic Tub Better?

- Stainless steel tubs are more durable, resist staining, and dry faster, while plastic tubs are typically cheaper but may stain over time and don't dry as efficiently. If you want a quieter, longer-lasting dishwasher, go for stainless steel, especially if you use your dishwasher frequently.

## How Much Water and Energy Do Dishwashers Use?

- Modern dishwashers are quite efficient. On average, they use about 3-4 gallons of water per cycle (compared to 27 gallons if washing by hand). Energy-efficient models can use as little as 1 kWh per load. Look for the Energy Star label to ensure low water and energy consumption.

## How Long Do Dishwashers Last?

- On average, dishwashers last about 10 years, though some high-end models can last 15 years or more with proper maintenance.

## What Detergent Should I Use?

- Most modern dishwashers work best with detergent pods or powder, as the liquid can sometimes create too many suds and hinder performance. If your dishwasher has no built-in rinse aid dispenser, check for detergents with rinse aids, as they help prevent spots and boost drying.

## Is a Wi-Fi-Enabled Dishwasher Worth It?

- It depends on your lifestyle. Wi-Fi-enabled dishwashers allow remote control, status updates, and maintenance alerts. Some users appreciate being able to check cycle times remotely.

## How Often Should I Clean My Dishwasher?

- Cleaning your dishwasher once a month helps keep it in top shape. You should also clean the filter regularly, wipe down the door seals, and run an empty cycle with dishwasher cleaner or vinegar to remove buildup and keep odors away.



# Frequently Asked Questions

## **What Should I Do if My Dishwasher Isn't Drying Dishes?**

- Check that your rinse aid dispenser is filled. Rinse aid helps dishes dry faster. Make sure you're not overloading, as dishes need space for airflow. For consistent issues, inspect the heating element (if your model has one) or consult a professional for repairs.

## **Is It Better to Handwash or Use a Dishwasher?**

- A dishwasher is usually more water-efficient and hygienic than handwashing, using hot water and powerful jets to sanitize dishes. Handwashing can use more water, especially if you leave the tap running. A dishwasher is the greener choice if you have a full load.

## **What's the Price Range for Dishwashers?**

- Dishwashers range from \$400–600 for budget models to \$1,300–3,600 for high-end models with advanced features. Mid-range models around \$800–1,000 offer good quality and useful features. Determine your budget and prioritize the features you'll use.



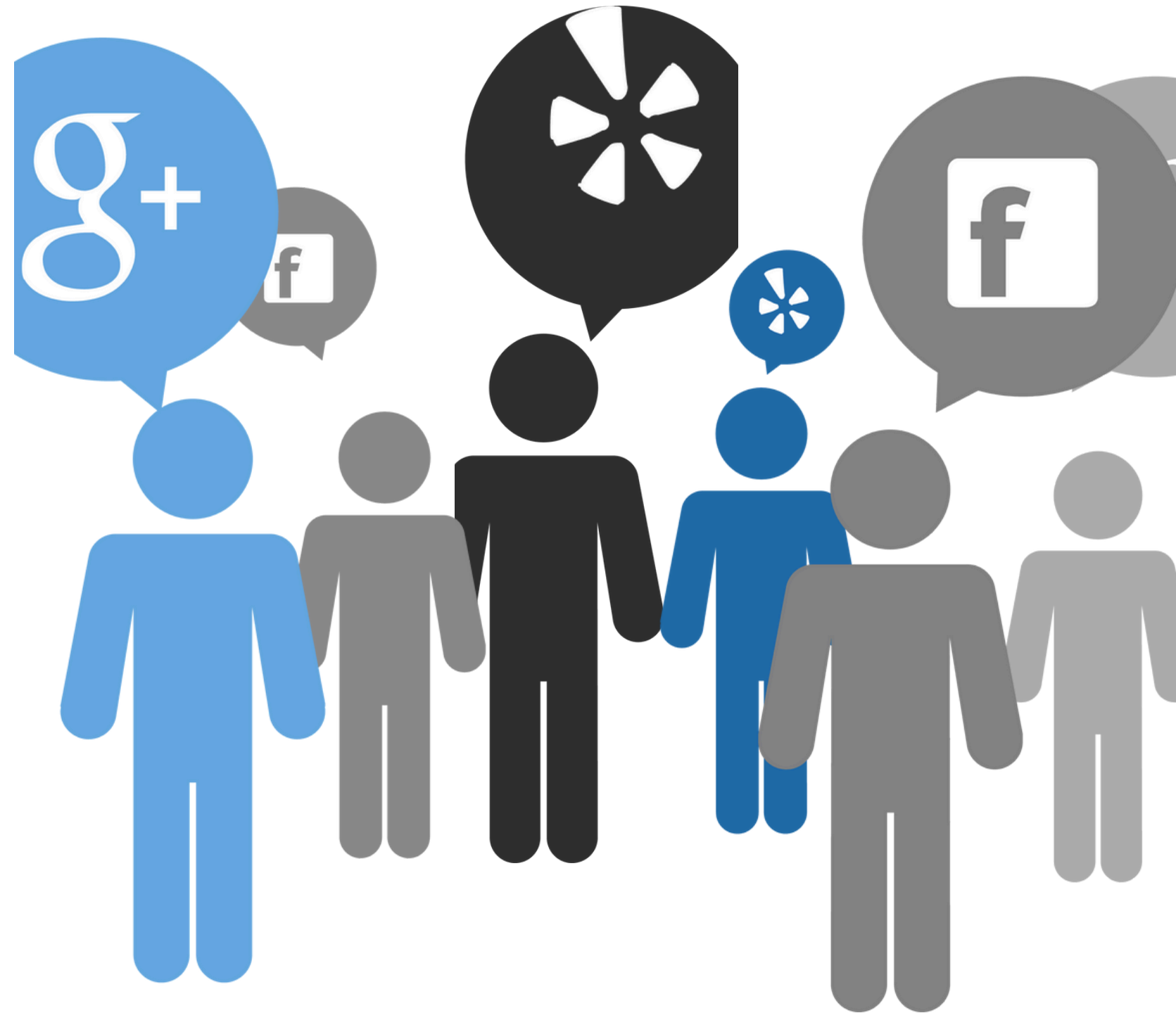
# Wisdom of Crowds

Buy where you're comfortable.

There are tons of stores and products, but a limited number of consumers.

Check review sites like Yelp, CitySearch, Google and the Better Business Bureau before you purchase.

Remember, any store can sell an appliance; the biggest issues are shipping and service.





# Appliance Delivery Checklist

Our free checklist will help you avoid a delivery nightmare by teaching you what to ask your appliance dealer.

Delivery issues are a major cause of dissatisfaction. Be prepared.

In the Delivery Checklist, you'll learn:

- How to choose a dealer with top-notch delivery
- Questions to identify a quality delivery team
- The importance of online reviews for your appliance search



**Get the Free Appliance  
Delivery Checklist**



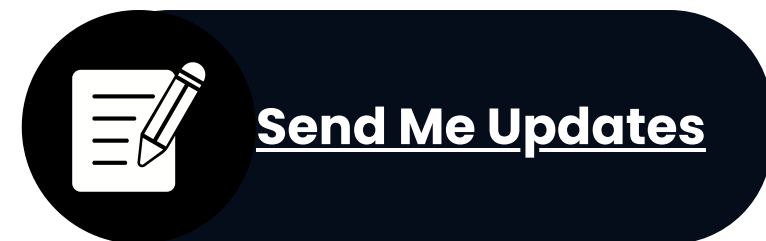


# Want to Learn More?

Want more tips, tricks, reliability statistics, and information about kitchen appliances sent directly to your inbox? Sign up below.

We do not sell your email to anyone for any reason – ever.

We don't spam or promote. Over 100,000 people have found value in Yale Appliance emails.







---

# About Us

Yale Appliance has been serving the Boston area for over 100 years and operates six showrooms: in Boston, Framingham, Hanover, Hyannis, Nantucket, and Norton.

We have the largest independent service and repair department in New England, staffed with over 40 people.

Our sales team has an average of 10 years of experience, and our staff chef offers cooking demonstrations to help you make the most of your new appliances



# Visit Our Stores

Schedule a showroom visit to meet with our team and discuss your appliance project.

Choose a time that works for your schedule.



**Schedule a showroom  
appointment**





# Contact Us

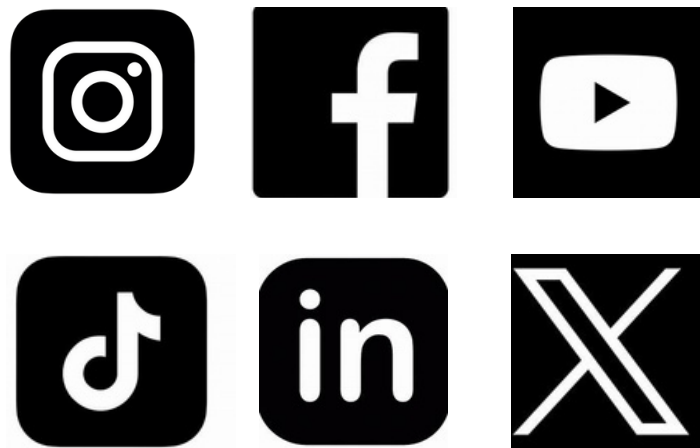
## Phone & Email

617-825-9253

[help@yaleappliance.com](mailto:help@yaleappliance.com)

[yaleappliance.com](http://yaleappliance.com)

## Social Media



### Dorchester

296 Freeport St



### Framingham

215 Worcester Rd



### Hyannis

127 Airport Rd



### Hanover

548 Washington St



### Norton

42 Leonard St



### Nantucket

5 Bayberry Ct